



**AMTRICÆ- piÈces du stock "08"**

tête bombée D		tête papillon W		tête moletée K		dimensions [mm]		
E ~1:1		E ~1:1		E ~1:1				
type	g/100pces	type	g/100pces	type	g/100pces	"H"max	L	"I"
D 0802	135	W 0802	215			3.0	11.2	9.3
D 0802.5	137	W 0802.5	218			3.5	11.7	9.7
D 0803	140	W 0803	220	K 0803	645	4.0	12.2	10.3
D 0803.5	142	W 0803.5	222			4.4	12.7	10.7
D 0804	145	W 0804	225	K 0804	650	4.8	13.0	11.1
D 0804.5	147	W 0804.5	226			5.1	13.4	11.5
D 0805	150	W 0805	230	K 0805	655	5.7	13.9	12.0
D 0806	155	W 0806	235	K 0806	660	6.8	15.0	13.1
D 0807	160	W 0807	240	K 0807	665	7.8	16.0	14.4
D 0808	165	W 0808	245	K 0808	670	9.0	17.2	15.3
D 0809	170	W 0809	250					
D 0810	175	W 0810	255					
D 0812	185	W 0812	260					
D 0832	190	W 0832	365					
matÉriel: laiton*		surface: brillante, nickelÉe*		les poids sont indicatifs				

\* autres dimensions, matÉriels ou surfaces sur demande

Toutes les dimensions in mm, Dimensions sans tolÉrance ± DIN 7168 m

Protection  
juridique  
© by amteca

Gez: VM5, RH

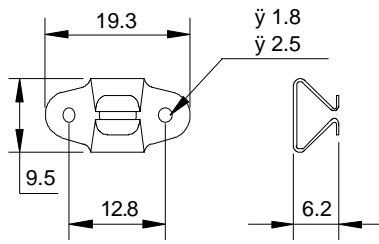
Gepr: D6, AH

amteca ag, Barzloostr. 20, CH-8330 PfÄffikon  
Tel. 01 951 06 60  
Fax 01 951 06 69

t-kb1-1f. chp (t-kb1-1d.sty) Rev:



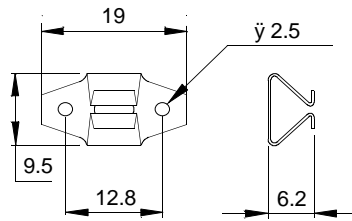
clip ressort C



E ~1:1

type	matÉriel	g/100pces
C 08-1.8	SZB	65
C 08-2.5	SZB	61

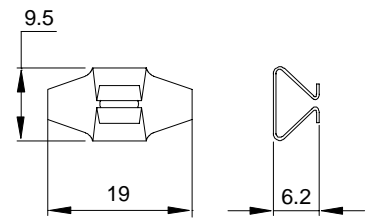
clip ressort C



E ~1:1

type	matÉriel	g/100pces
C 08-M-IX	IX	60

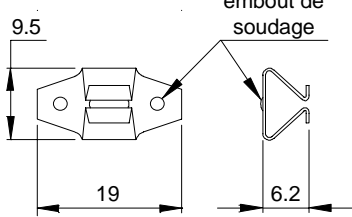
clip ressort C (sans trou)



E ~1:1

type	matÉriel	g/100pces
C 08-O-IX	IX	60

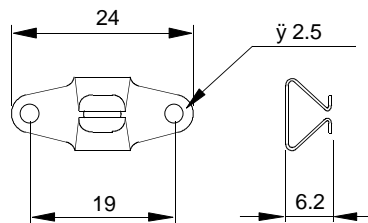
clip ressort C (± embout)



E ~1:1

type	matÉriel	g/100pces
C 08-SB-IX	IX	60

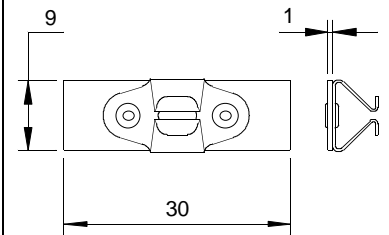
clip ressort C



E ~1:1

type	matÉriel	g/100pces
C 08-19	SZB	68

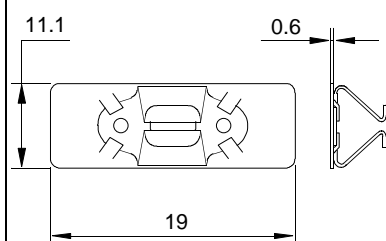
clip ressort CP



E ~1:1

type	matÉriel	g/100pces
CP 08	SZB	165

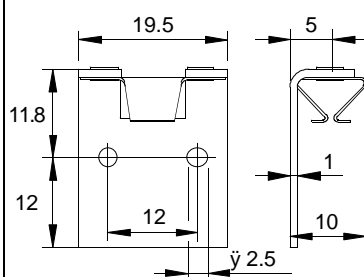
clip ressort CPR



E ~1:1

type	matÉriel	g/100pces
CPR 08	SZB	170

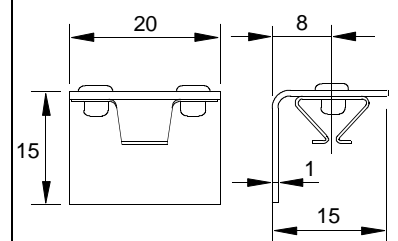
Èquerre de montage MSC



E ~1:1

type	matÉriel	g/100pces
MSC 08-1	SZB	410

Èquerre de montage MSC



E ~1:1

type	matÉriel	g/100pces
MSC 08-2	ALB	220

\* autres dimensions, matÉriels ou surfaces sur demande

Toutes les dimensions in mm, Dimensions sans tolÉrance ± DIN 7168 m

Protection  
juridique  
© by amteca

Gez: VM5, RH

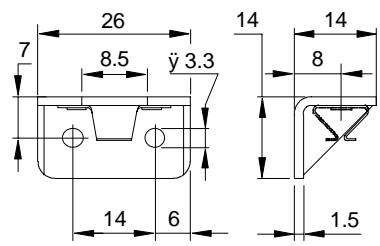
Gepr: D6, AH

amteca ag, Barzloostr. 20, CH-8330 PfÄffikon  
Tel. 01 951 06 60  
Fax 01 951 06 69

t-kb1-1f. chp (t-kb1-1d.sty) Rev:



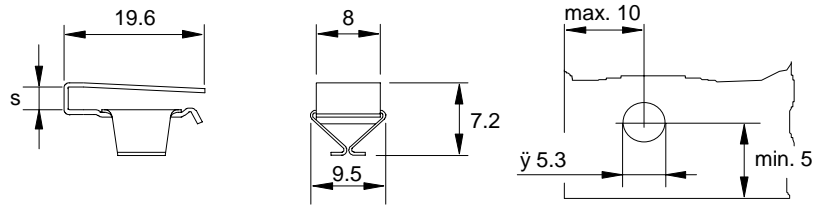
Èquerre de montage MSCR



E ~ 1:1

type	matÈriel	g/100pcs
MSCR 08	SZB	720

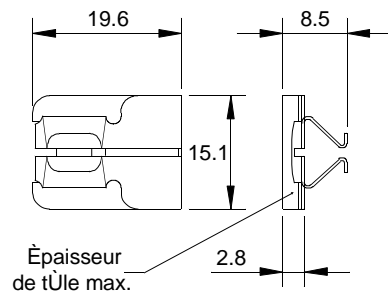
clip ressort CS



E ~ 1:1

type	s	matÈriel	g/100pcs	Èpaisseur de tÙle s
CS 08-1.4	1.4	SZB	165	s → 0.5 - 1.4mm
CS 08-3.0	3.0	SZB	170	s → 1.5 - 3.0mm

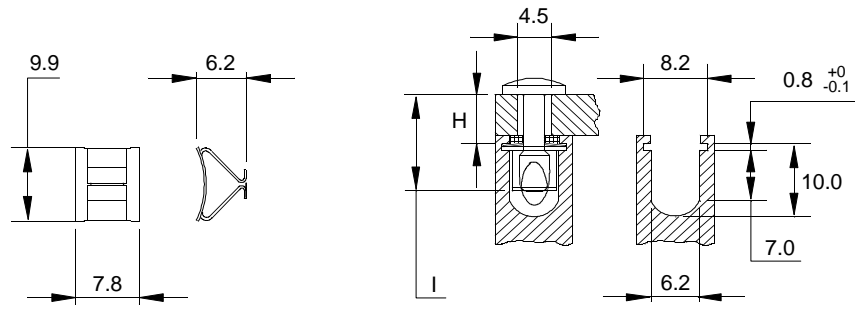
clip ressort CC



E ~ 1:1

type	matÈriel	g/100pcs
CC 08	SCN	

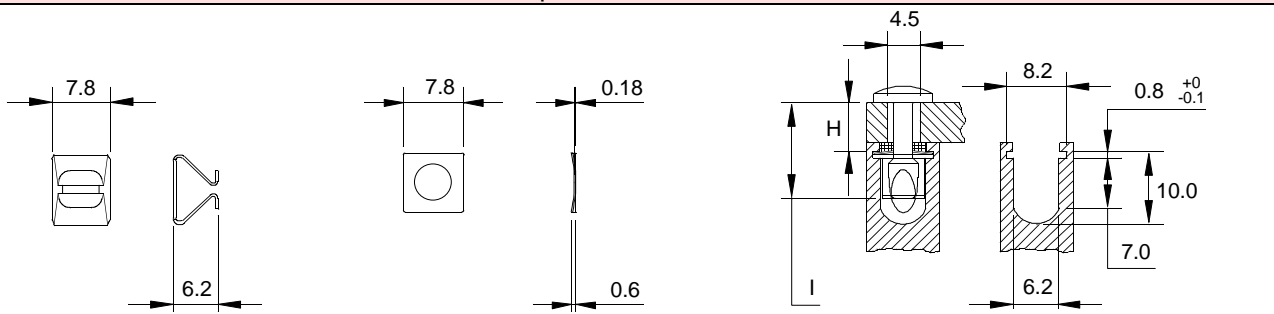
clip ressort CS



E ~ 1:1

type	matÈriel	g/100pcs	profilÈ spÈcial
CS 08-SB	SB		sur demande

clip ressort CS



E ~ 1:1

type	matÈriel	g/100pcs	type	matÈriel	g/100pcs	profilÈ spÈcial
CF 08	SZB	40	BS 08	SZB	8	sur demande
CF 08-IX	IX	40	BS 08-IX	IX	8	

\* autres dimensions, matÈriels ou surfaces sur demande

Toutes les dimensions in mm, Dimensions sans tolÈrance ± DIN 7168 m

Protection  
juridique  
© by amteca

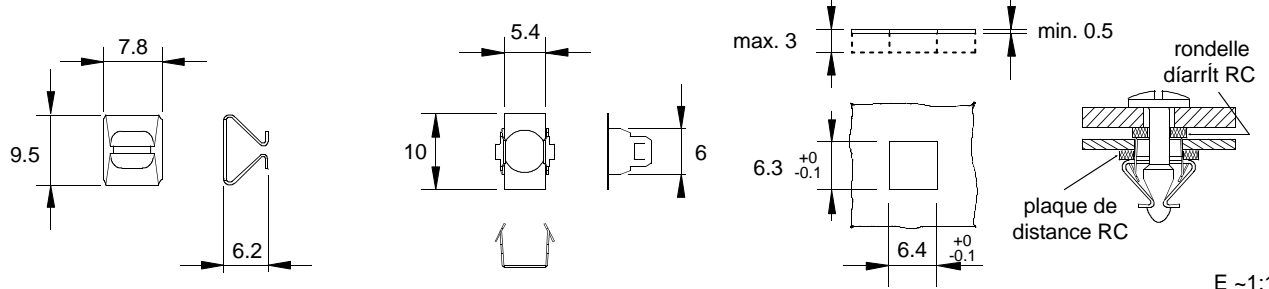
Gez: VM5, RH

Gepr: D6, AH

amteca ag, Barzloostr. 20, CH-8330 PfÈffikon  
Tel. 01 951 06 60  
Fax 01 951 06 69



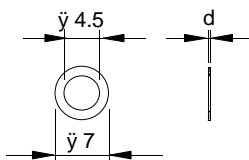
clip † assemblage CR 08 encliquetable (rondelle diarrít RC et plaque de distance RC)



type	matÉriel	g/100pcs	type	matÉriel	g/100pcs
CR 08 C	SZB	40	CR 08 H	SZB	13
CR 08 C	IX	40	CR 08 H	IX	13

Pour dÉfinir liÉpaisseur de serrage "H" avec le clip ressort CR 08 on calcule pour la partie fixe toujours une Épaisseur de 3 mm. Le trou est estampÉ diaprÈs les croquis ci-dessus.

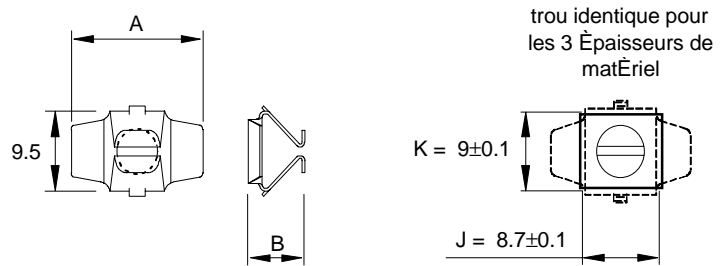
rondelle de tÍte RT



type	d	g/100pcs
RT 0208	0.2	0.5

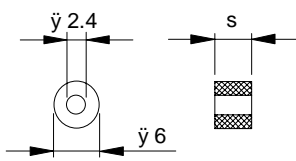
matÉriel: Nylon nature

clip ressort CCR



type	matÉriel	g/100pcs	Épaisseur de la base	A	B
CCR 08-1	XL	58	0.5 - 0.89	18.9	6.7
CCR 08-2	XL	58	0.9 - 1.19	17.5	7.2
CCR 08-3	XL	58	1.2 - 2.00	16.9	8.0

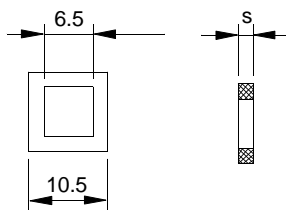
rondelle diarrít R



type	S	g/100pcs
R 0508	0.5	1.5
R 1208	1.2	3.0
R 1708	1.7	5.0
R 2508	2.5	7.0
R 3208	3.2	8.0
R 4808	4.8	15

matÉriel: Neoprene

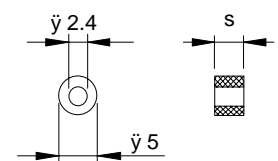
plaque de distance RC (Clip CR)



type	S	g/100pcs
RC 0508	0.5	6
RC 1008	1.0	9
RC 1508	1.5	14
RC 2008	2.0	17

matÉriel: Neoprene

rondelle diarrít RC (Clip CR)



type	S	g/100pcs
RC 4008	3.8	7

matÉriel: Neoprene

\* autres dimensions, matÉriels ou surfaces sur demande

Toutes les dimensions in mm, Dimensions sans tolÉrance † DIN 7168 m

Protection  
juridique  
© by amteca

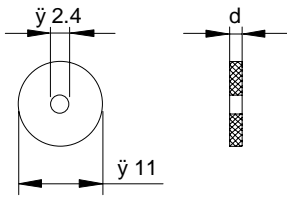
Gez: VM5, RH

Gepr: D6, AH

amteca ag, Barzloostr. 20, CH-8330 PfÉffikon  
Tel. 01 951 06 60  
Fax 01 951 06 69



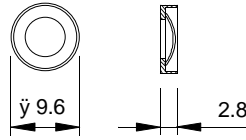
joint d'ÉtanchÉitÈ RW



E ~1:1

type	d	g/100pces
RW 1508	1.5	17
matÉriel: Neoprene		

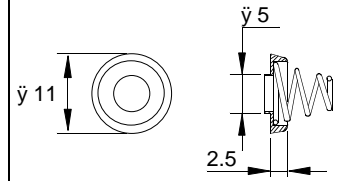
compensateur d'Épaisseur TAR



E ~1:1

type	d	g/100pces
TAR 08	1.5	25
matÉriel: inox, matiÈre plastique		

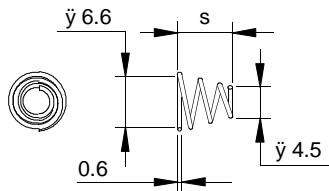
compensateur d'Épaisseur TA



E ~1:1

type	d	g/100pces
TA 08	1.5	95
matÉriel: inox, laiton nickelÉ		

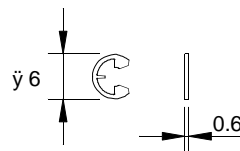
ressort cÙnique KF



E ~1:1

type	S	g/100pces
KF 08		10
matÉriel: inox		

rondelle de sÈcuritÈ SR



E ~1:1

type	S	g/100pces
SR 08	0.6	7
matÉriel: acier zinguÈ, passivÈ bleu		

\* autres dimensions, matÉriels ou surfaces sur demande

Toutes les dimensions in mm, Dimensions sans tolÉrance ± DIN 7168 m

Protection  
juridique  
© by amteca

Gez: VM5, RH

Gepr: D6, AH

amteca ag, Barzloostr. 20, CH-8330 PfÄffikon  
Tel. 01 951 06 60  
Fax 01 951 06 69

t-kb1-1f. chp (t-kb1-1d.sty) Rev: